



RESIDENTIAL

Build a home that's more efficient, safer and stronger.



INTRODUCTION



Nudura ICFs are a proven method of providing you a better alternative to traditional building methods

Homes today demand reliable, energy efficient and eco-friendly walls that provide superior performance benefits to minimize energy costs, reducing carbon emissions, and maximizing property value. Nudura homes offer superior strength, disaster resilience, sound and fire-resistance, and energy efficiency. This is why the design community, developers, builders and contractors across the world continue to choose Nudura's Insulated Concrete Forms (ICF) and insulation products as a proven alternative to traditional building methods.

Nudura products provide design professionals, architects, homeowners and contractors the freedom and versatility to design and build a home the way it was envisioned. Building with Nudura gives you the opportunity to build faster and more efficient, while offering an eco-friendly home with substantial benefits that contribute to long-term energy savings. When choosing Nudura ICF you can rest assured you have chosen the best building solution available today.

Nudura is now proudly part of Tremco Construction Products Group (CPG). A Tremco CPG single-source building envelope means more for everyone – more satisfied contractors, more comfortable occupants or tenants, and more efficient structures and cost-effective operation for homeowners.



Improved home comfort comes standard when you start with ICFs!



Energy Savings

When you choose to invest in Nudura Insulated Concrete Forms (ICFs) , you can say goodbye to high heating and cooling costs in your home. Nudura can help improve the energy efficiency of your home by up to 58%* compared to traditional construction. How does it work? The solid mass of the Nudura wall has some unique qualities. The monolithic concrete is layered between two continuous panels of 2 5/8" (67mm) thick EPS foam, which isolates the concrete and reduces the ability for outside temperatures to flow through the wall, keeping internal temperatures steady and the need for mechanical equipment to come on less. Learn more about how Thermal Mass works – nudura.com/thermalmass



Safety

The strength of Nudura comes from the solid concrete core. Nudura walls are built with steel reinforced concrete and a non-toxic fire-retardant Expanded Polystyrene foam (EPS), providing a fire protection rating of up to 4 hours - 4 times that of a typical wood frame home. Nudura structures can withstand winds up to 250mph (402kph) ensuring your family and home are safe and secure in almost any situation, saving homeowners from having to rebuild their homes.



Sound Dampening

The Nudura ICF Series of products also acts as an effective sound barrier by dampening sound vibrations from unwanted outside noise, such as traffic, trains, and neighbors, providing a minimum STC (Sound Transmission Class) rating of STC 50**.



Indoor Air Quality

The end result is an airtight structure that enables building mechanical systems to heat, cool and ventilate the structure more efficiently, creating a healthier living or working environment. Nudura ICFs do not emit CFCs or HCFCs thereby improving indoor air quality.

*As proven by third party testing conducted by CLEB Laboratories and the Insulating Concrete Forms Manufacturers Association (ICFMA)

**STC 50 rating based on minimum 6" (152mm) Nudura form concrete core thickness or larger, installed with code compliant finishes mounted both sides of wall assembly in accordance with Nudura installation procedures.

THE ANATOMY OF COMFORT

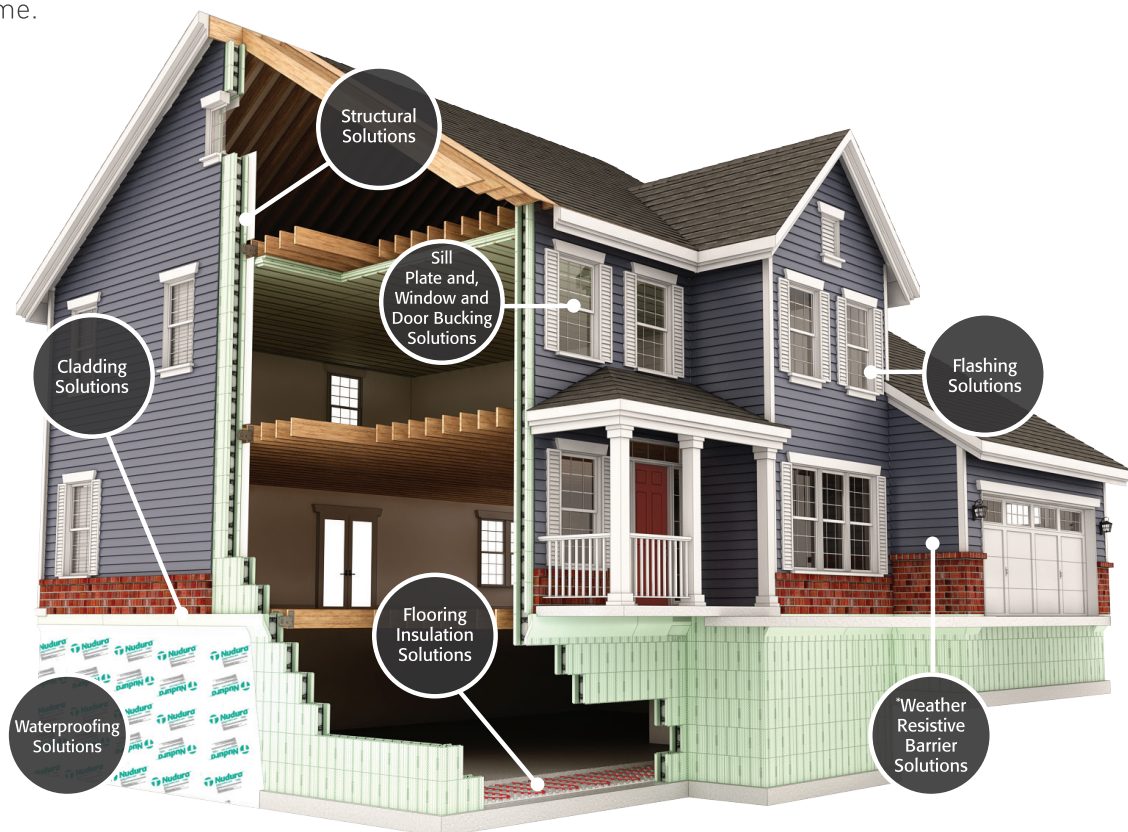
The Power of One

Homeowners have many choices when it comes to deciding what products to use to build their dream home. The Nudura line of insulation products and Tremco CPG systems provide solutions for maximizing energy efficiency, providing greater protection from the elements, minimizing noise, all while providing a comfortable home.

Nudura and Tremco CPG give homeowners the freedom and versatility to design and build any way they want; with any look they want. Starting with the wall, Nudura Insulated Concrete Forms (ICFs) come together with other Tremco CPG technologies to provide a variety of benefits such as speeding construction, mitigating weather delays, controlling costs, decreasing maintenance requirements, and improving energy efficiency.

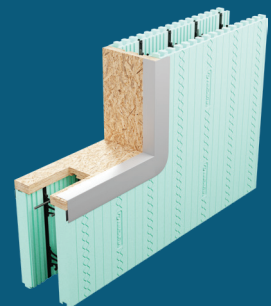
With a home protected by all of these building solutions, families can enjoy a more energy efficient, comfortable, safer, and more sustainable home for generations to come.

It's the Power of One: One building envelope. One warranty. One powerful system delivering unmatched protection for your home.



Structure Solutions

Insulated Concrete Forms (ICFs) are stay-in-place forms that offer you a variety of superior benefits when building your new home. Nudura ICFs are stacked, then steel reinforced and filled with concrete, which completes the building envelope of your home in one building step. With a full range of products to meet every insulation need, from the Integrated Series for ceilings and floors to our Nudura ICF Series for your homes structure, these proven products will provide you with the home you have always dreamed of, with added benefits over traditional construction.



* Note: with the use of ICFs weather resistive barriers are optional and not always required.

PROVIDING SOLUTIONS

Waterproofing Solutions

Tremco's industry-leading below-grade waterproofing technologies ensure watertight, durable foundations. From roller/spray applied to peel & stick membranes, we have a waterproofing solution perfect for any project.



Flooring Insulation Solutions

If you are looking to have radiant heat in your next home, the Nudura HYDROFOAM maximizes radiant floor heating by ensuring the heat is dispersed evenly throughout the entire floor area. Easily cut to meet any angle or radius while providing up to R-16 (RSI 2.82, U-value 0.35) insulation value.



Sill Plate and, Window and Door Bucking Solutions

Prebuck sill plate, and window and door buck solutions offer the strongest, fastest, and smartest solutions available. Specifically designed for direct contact with concrete and non-corrosive to metals, Prebuck products feature TimberStrand Strandguard (LSL) engineered lumber treated with zinc borate for exceptional resistance to insects and decay. Prebuck products also feature MDI resin, the 100% waterproof bonding agent that turns to a durable plastic when cured.



Flashing Solutions

Tremco offers a complete product portfolio to meet any demanding job site condition. Such products include an impermeable, self-adhered roll membrane, as well as a durable, flexible sealant which both offer excellent performance in mitigating air infiltration/ex-filtration, vapor transmission and water penetration around window and door locations.



Weather Resistive Barrier Solutions*

Tremco weather resistive barrier (WRB) solutions deliver a more effective, permanent, and complete weather-resistant barrier than traditional house wrap products. Protects walls from liquid moisture in the form of rain, sleet, and snow.



Cladding Solutions

If you are looking for cladding solutions that bring new levels of protection to a formerly neglected area of foundation - from grade line to exterior finish. We offer a number of solutions that provide an aesthetically pleasing design with unmatched rugged durability.



* Note: with the use of ICFs weather resistive barriers are optional and not always required.

WHY WOOD YOU?

Why would you build with wood when the benefits of building with ICFs are endless?

Tariffs, environmental constraints, the pandemic, and a resurging construction market have left home builders cornered and searching for alternative building solutions. Nudura ICF's are high-tech industry-leading insulated concrete form that have proven technologies to make building easier and faster.

Nudura's industry-leading insulated concrete forms (ICF) provide a structural reinforced concrete that offers substantially better durability and typically **better results** in lowering life cycle costs compared to wood structures. Offering superior performance when it comes to thermal bridging, resulting in even temperatures throughout your home will reduced drafts and cold spots, ensuring you are comfortable no matter what the temperature is outside, **saving owners up to *58% in annual energy costs**. ICF also provide the added bonus of acting as an effective sound barrier by dampening sound vibrations from unwanted outside noise, such as traffic, trains, and neighbors.

Nudura ICFs provide greater impact resistance and can be engineered to withstand some of mother nature's worst. Nudura ICFs walls are built with reinforced concrete and fire-retardant Expanded Polystyrene Foam (EPS), this provides a superior fire protection rating of up to 4 hours - 4 times that of a typical wood-frame home. Nudura's concrete embedded multi-purpose roof/ truss anchor system provides greater resistance like winds up to 250 mph (402 kph) ensuring that the occupants of the home are safe and secure.

*Information provided by the ICFMA data report <https://icf-ma.org/resources/thermal-study/>.



*Image of Nudura Home by
Johnny Milano*

BUILD SMARTER, BUILD STRONGER

Comparing Nudura vs Wood Framing

COMFORT AND QUIET	NUDURA	WOOD FRAMES
Calculated R-Value	R-23.59 (RSI 4.16, U-Value 0.24)	R-11 to R-19 (RSI 1.94-3.35, U-Value 0.52 - 0.30)
Tested R-Value of Wall*	R-24.1 (RSI 4.25, U-Value 0.24)	R-15.2 (RSI 2.68 and U-Value 0.37)
Reduced Heating & Cooling Cost	Yes	No
Thermal Mass	up to 75 lbs/sq.ft. (3.59kPa)	2 lbs/sq.ft. (0.10kPa)
Typical Air Leakage	1.11 ACH	3.36 ACH
Sound Dampening	Effective	Minimum

*ASTM C-1363 testing per ICFMA/UCL(CLEB) Laboratories

STRENGTH AND DURABILITY	NUDURA	WOOD FRAMES
Bearing Capacity Top of Wall	41800plf (60192kg/m)*	5404plf (8041 kg/m)**
Wind Capacity	250mph (402kph)	90mph (145kph)
Fire Rating	4+ hours*	45 mins
Flying Debris Protection	Assured	Minimal
Defends Against Termite & Pest Intrusion	Yes	No
Interior Finish Nail Pop	No	Yes
Wood Split & Warp	No	Yes
Risk for Mould Growth & Rot	None	High Risk

*As per Nudura's UL/UCL listings

** As per American Wood Council DES230



Get in touch with a distributor near you!

Next Step

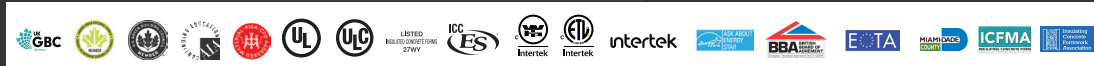
The next step to building your Nudura home is to find a Trained Nudura Installer (contractor) through a local Authorized Nudura Distributor. Nudura distributors provide extensive technical support and service, installation recommendations to maximize efficiency and cost savings, and provide current code compliance advice for local, regional, and national building codes. Call 866-468-6299 or visit nudura.com to locate a distributor in your area.

Online Tools & Resources

Nudura makes the design process as easy and efficient as possible. Our website provides valuable design tools and resources for you and your architects, contractors, and design professionals. Our network of Authorized Nudura Distributors can also provide industry leading technical support.

nudura.com | 866-468-6299

Distributed By:



The information contained in this Nudura® Product Catalogue is presented only for the purpose of providing information on the various products composing the Nudura Integrated Building Technology and any associated accessories (the "Nudura Products"), as well as affiliated Tremco Construction Products Group brands. This Product Catalogue should not be used as a substitute for professional engineering consultation. Nudura makes no general warranties to the specific applicability of any of the Nudura Products to any or all situations for which a designer may elect their specific use. Final amendment or modification to suit the exact circumstance of employment of the Nudura Products is the responsibility of the project designer. Nudura does not have any control over the workmanship used in the assembly or installation of the Nudura Products. Nudura®, Integrated Building Technology®, Building Has Evolved®, DURALOK Technology®, DURAFOLD Technology®, DURAMAX Technology® and DURA MULTI-LINK® are trademarks of Nudura Inc. All other trademarks cited herein are the property of their respective owners.

Follow us on:



Construction Products Group