



Composite Cladding

for Rainscreen Applications



The beauty of wood meets advanced composite technology.

Fiberon® Composite Cladding combines the beauty and warmth of wood with the durability of low-maintenance, high-performance composite materials.

- Two distinct finishes offer subtle or dramatic multi-tonal streaking.
- Four-sided PermaTech® cap layer provides stain and fade resistance.
- Wood-composite core prevents splintering, rotting, cracking, insect infestation and decay.
- Never needs sanding, staining or sealing, making it perfect for projects where low maintenance costs are critical.
- Contains 94% pre- and post-consumer recycled content, is free of toxic chemicals and preservatives, and is manufactured using sustainable processes.

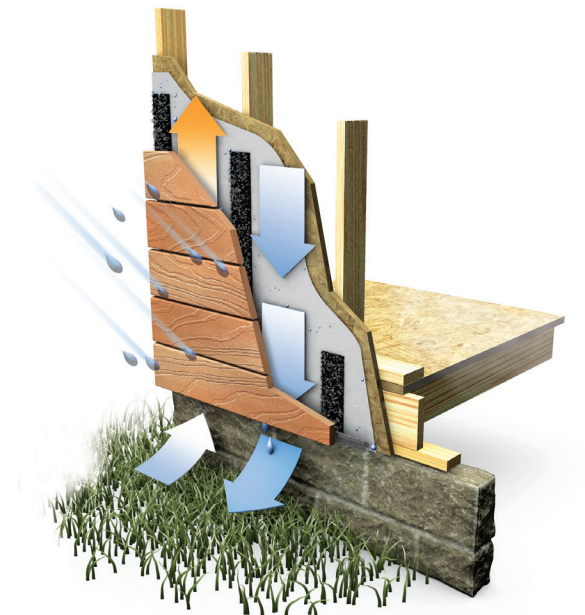


The key to preventing moisture-related damage is to create walls that effectively manage bulk water infiltration, capillary water intrusion and water vapor exfiltration.

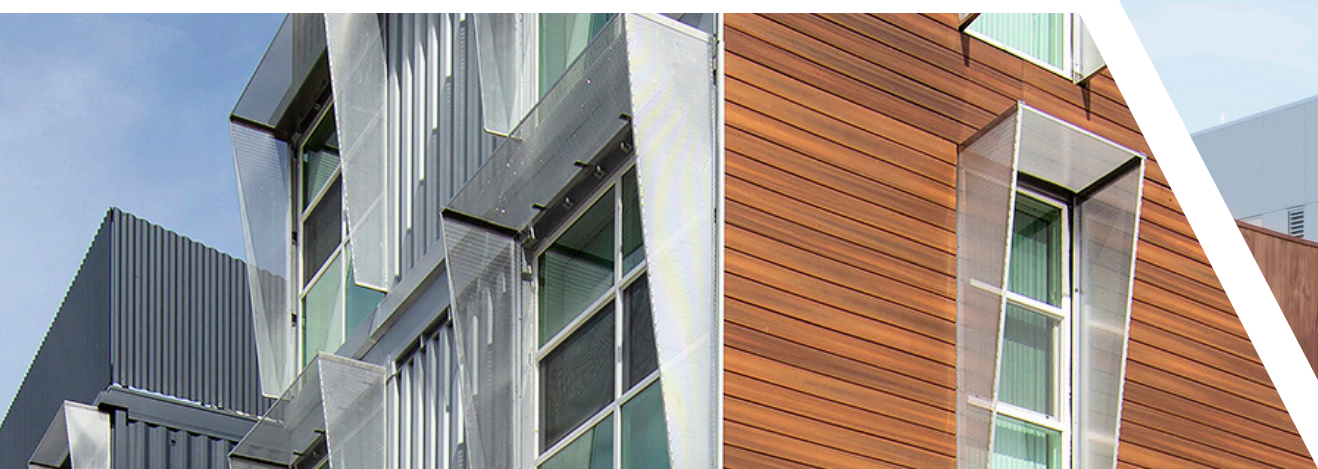
- Deflection—Keeping as much precipitation off the exterior wall enclosure as practically possible.
- Drainage—Draining away any water that does strike and penetrate the cladding.
- Drying—Providing sufficient ventilation to evaporate residual moisture, and arranging materials for gradual drying by diffusion.
- Durability—Selecting materials that can withstand periodic wetting without deterioration over the service life of the enclosure.

Proper material choice is critical. Rainscreen systems are one of the most effective methods for managing moisture and mitigating its damage to residential and commercial structures.

Backed by industry-leading warranties.



Note: See your Fiberon seller or visit www.fiberoncladding.com for details on limited warranties and exclusions.



Curb appeal reimaged.

Developed in response to the growing popularity of mixed material building designs, Fiberon® Composite Cladding provides a warming design element to balance cool materials like metal and concrete. It features rich, nature-inspired embossing for superior wood emulation making it an ideal solution for cladding, soffits, ceilings and screen façades.



Color and Grain



Concordia™ Decking Horizon® Collection



Concordia™ Decking Symmetry® Collection



Bold and beautiful.

Featuring dramatic color tones and varied grain patterns, the Concordia Horizon Collection transitions seamlessly from horizontal to vertical rainscreen applications. Available in four striking colors, Horizon is protected on all four sides by our exclusive PermaTech® cap layer.

Refined and sophisticated.

The Concordia Symmetry Collection, approved for rainscreen applications, displays the ultimate nature-inspired color palette complemented by sophisticated embossing for unmatched wood emulation, and the superior durability of PermaTech.

Cladding Profiles

Fiberon® Composite Cladding is ideal for open-joint profile rainscreen applications. Available in a variety of sizes, the Horizon® and Symmetry® Collections feature two different color palettes and unique embossed grain patterns, providing unlimited creative options for the inspired designer.

Concordia™ Square-Edge Decking

Symmetry and Horizon Collections
1x6
6 ft. (152 mm) Face
.935 in. x 5.4 in. (25.4 mm x 152 mm)
Lengths: 12 ft. (3.66 m), 16 ft. (4.88 m) and 20 ft. (6.1 m)

Concordia™ Fascia Board

Symmetry and Horizon Collections
.75 in. x 11.25 in.
(19 mm x 285 mm)
Lengths: 12 ft. (3.66 m)

Concordia™ Riser Board

Symmetry and Horizon Collections
.75 in. x 7.25 in.
(19 mm x 184 mm)
Lengths: 12 ft. (3.66 m)



Cladding Fastener Systems

Starborn® fascia fasteners are available for color-matched face fastening (Fascia System) and plug fastening (Pro Plug® System Fascia). In both systems, a fascia tool pre-drills and countersinks an oversized hole for the fascia screw so the cladding board hangs from the screw, allowing for expansion and contraction. This can help prevent the cladding from warping or the fasteners from snapping due to shear pressures caused by expansion or contraction of the cladding board.

For steel channel furring, color-matched Deckfast® Metal fasteners are available with or without hidden fastener plugs. These may be ordered directly from Starborn Industries.

To meet Miami-Dade TAS performance a minimum #9 x 2-1/2 in. fastener is required.

Color-matched face fastening screws.

Face fasteners hidden with Starborn Pro Plug System.





An unlikely match.

You're usually asked to choose between wood or plastic. Natural or synthetic. Paper or plastic.

Our sustainability story starts with this unlikely match — all the best qualities of recycled wood, combined with the long-lasting resilience of recycled plastic. The blending of these two materials is the reason why our products last, and why they're sustainable from start to finish.

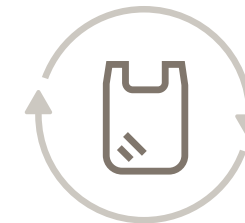


Trees are beautiful.

About half of what's in our decking comes from recycled wood — sawdust and leftover material that would otherwise be discarded.

One Million
Healthy trees saved every year from deforestation.

= 15,000 Football Fields of Trees

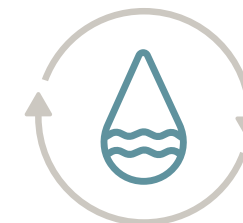


Plastic lasts a lifetime...or 10.

The other half of the core of our deck boards comes from recycled plastic. Think grocery bags and recycled packaging material.

100 Million
Pounds of recycled plastic used per year.

= Weight of Two Full Cruise Ships



Resourceful to the last drop.

Manufacturing composite decking requires a constant source of water. The good news is, we reuse almost all of it with our closed-loop system.

3.5 Billion
Gallons of water prevented from entering the waste stream.

= 5,300 Olympic Swimming Pools



Don't waste a thing.

We reuse 98.5% of the waste from our manufacturing process — from misfit boards to router clippings. Every day.

98.5%
Manufacturing waste repurposed every day.

= Annual Household Food Waste Reduced to One Bunch of Bananas



fiberon[®] balance

94%
recycled

Fiberon[®] products are free of toxic chemicals and contain up to 94% recycled content.



Through Fortune Brands Home & Security, we're partnering with the National Forest Foundation in their effort to plant 50 million trees.

Fiberon® Composite Cladding outperforms the rest.

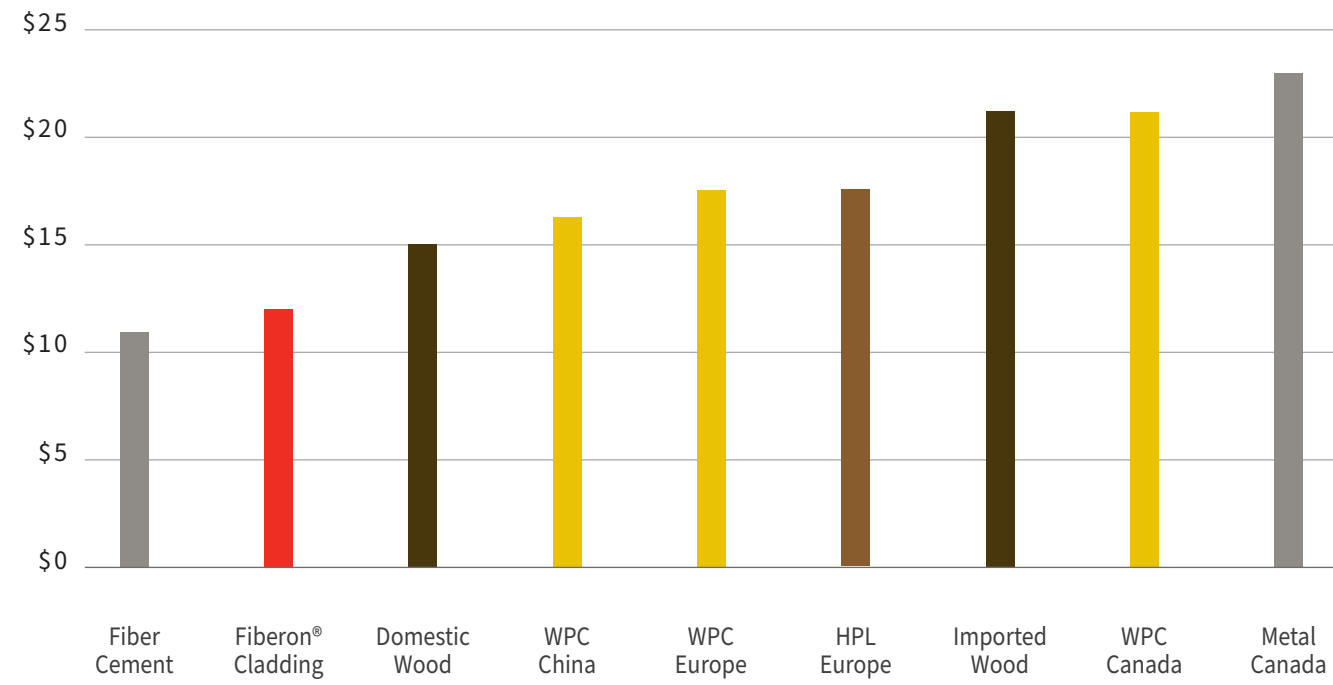
		Fiber Cement Cladding	Wood Cladding
ECONOMICS	Country Of Origin	Varies	Harvested from tropical rainforests
	Installed Cost (per sq.ft.)	Low Cost	Moderate Cost
	Special Tools or Skill Required	Ventilation, masks and special cutters.	Titanium bits, router bits and saw blades. Special end treatments.
	Skill Level of Labor	Labor is readily available. Skill level needed is moderate.	Labor is readily available. Skill level required is low.
	Pre-Finished	Needs to be finished on jobsite, unless pre-finished.	Needs to be sealed on ends and finished on all four faces on jobsite.
	Lead Times	< 2 weeks	> 2 weeks
ENVIRONMENT	Manufacturing	Made in relatively close proximity to most jobsites. Shipping costs are low.	Rainforest species sources where grown. Shipping cost is significant.
	Recycled Content	Low to None	None
	Environmental Impact	Factory pre-finishing is optional. Regular painting required. Frequency dependent upon coating used. Environmental impact is moderate.	Rainforest deforestation, requires annual maintenance to maintain color; will still experience significant degradation. Environmental impact estimated as high.
TESTING	Code Listed	Yes	No
	Miami-Dade (TAS 1, TAS 2, TAS 3)	No	No
	FL Approval	Yes	No
	TDI Approval	Yes	No
	NFPA 268	Yes	No
	NFPA 285	Yes	No
WARRANTY	Commercial Warranty	Yes	No
	Performance Warranty	30	None
	Finish Warranty	0-15	None
	Stain Warranty	No	No
	Fade Warranty	No	No
	Fastener Warranty	No	No
	Impact Resistance	Very Low	Very High
DESIGN USES	On-Grade Façades	No	Yes
	Above-Grade Façades	Yes	Yes
	Soffit	Yes	Yes
	Ceiling	No	Yes
	Vertical	Yes	Yes
	Horizontal	Yes	Yes
	Diagonal	No	Yes
	Curved	No	Yes

PVC	HPL	Metal	fiberon® Composite Cladding
Varies	Varies	Varies	Made in USA
Moderate Cost	High Cost	High Cost	Low Cost
Basic knowledge.	Training required.	Training required.	Basic knowledge.
Labor is readily available. Skill level required is low.	Labor may not be readily available. Skill level required is moderate to high.	Labor may not be readily available. Skill level required is moderate to high.	Labor is readily available. Skill level required is low.
Pre-finished	Pre-finished	Pre-finished	Pre-finished
< 2 weeks	> 2 weeks	> 2 weeks	< 2 weeks
Made in PA only. Shipping cost can be significant.	Made offshore. Shipping costs can be significant.	Made in Canada. Shipping costs can be significant.	Made in USA in bi-coastal plants and stocked throughout North America. Shipping is nominal.
Moderate	None	Low	High
No refinishing is required. Maintenance is low impact. Transportation impact is moderate.	No refinishing is required. Maintenance is low impact. Transportation impact is moderate.	No refinishing is required. Maintenance is low impact. Transportation impact is moderate.	94% recycled content. No refinishing is required. Maintenance is low impact, transportation impact is low.
Yes	Yes	Yes	Yes
No	Yes	No	Yes
Yes	Yes	Yes	Yes
No	No	No	Yes
No	No	No	Yes
No	Yes	Yes	Not tested
No	Yes	Yes	Yes
Lifetime Limited	Yes	Yes	Yes
30 Year	10 Year	50 Year	20-Year Residential / 10-Year Commercial
Yes	Yes	Varies	20-Year Residential / 10-Year Commercial
Yes	No	Yes	20-Year Residential / 10-Year Commercial
25 Year	No	No	Varies by manufacturer
High	High	Very Low	Very High
No	No	No	Yes
Yes	Yes	Yes	Yes
No	Yes	Yes	Yes
No	Yes	Yes	Yes
Yes	Yes	Yes	Yes
Yes	Yes	Yes	Yes
Yes	No	No	Yes
Yes	No	No	Yes

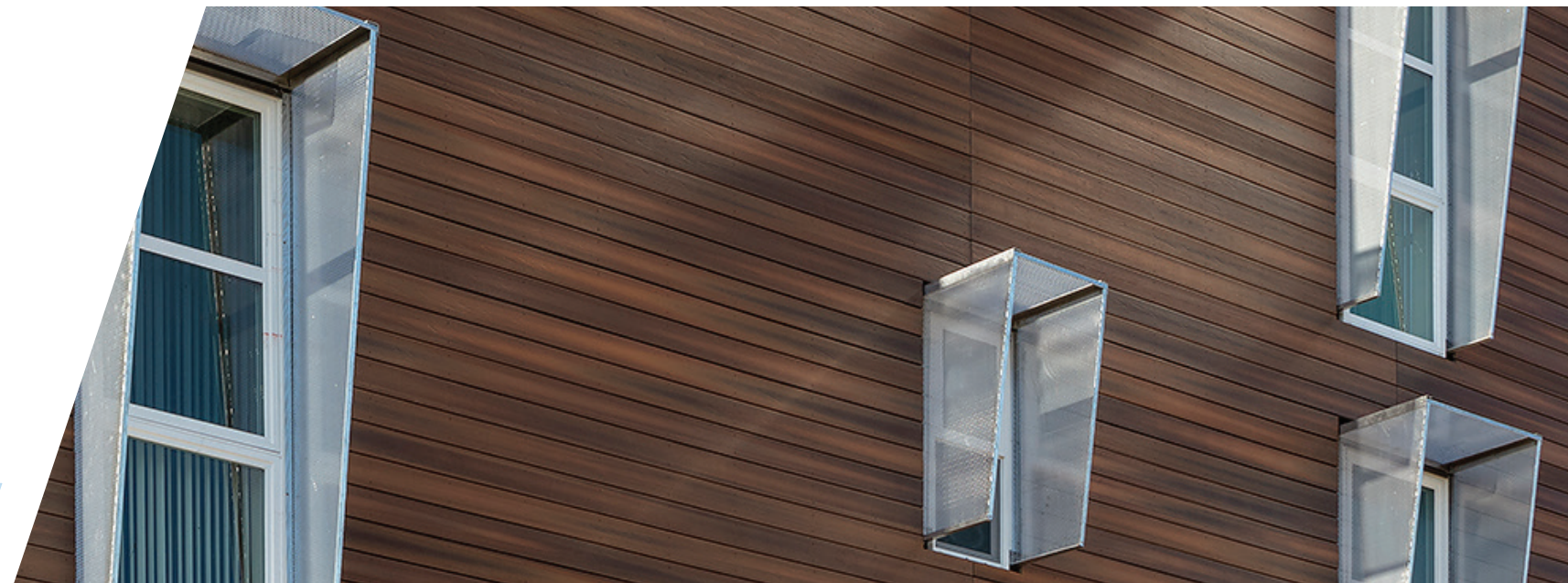
WARNING:
Drilling, sawing, or machining wood-composite products containing wood fiber can expose you to wood dust, a substance known to the State of California to cause cancer. Avoid inhaling dust generated from wood-composite products or use a dust mask or other safeguards for personal protection. For more information, go to www.P65Warnings.ca.gov.

Note: See your Fiberon seller or visit www.fiberoncladding.com for details on limited warranties and exclusions.

Installed (sq. ft.) price for wood and wood-emulating cladding.



Estimated cladding cost (per sq. ft.) based on company findings. Estimated costs includes cladding material plus installation only.



For installation instructions and additional information visit fiberoncladding.com.



Discover the Fiberon® difference at fiberoncladding.com.

Fiberon is a leading manufacturer of high-quality, low-maintenance, wood-alternative decking, railing and cladding. Manufactured in the United States, Fiberon products are available across North America and in more than two dozen countries in Europe, Asia, Australia, and Central and South America. An innovation leader with a focus on sustainability, Fiberon was acquired by Fortune Brands in 2018 and maintains operations in North Carolina and Idaho.



“Fiberon is aesthetically pleasing, has much better long-term performance, and offers a real advantage relative to maintenance cost.”

- Jeff Sheppard, AIA, Principal / Founder,
Roth Sheppard Architects

Turning cladding design dreams into reality.

Planning a new project can be challenging – we’re here to help. Fiberon Discovery provides quick and easy-to-use design tools that save you money by reducing project costs, changes, rebidding and reworking.

In addition to our design and visualization tools, Fiberon Discovery also includes:

- Product and color selection tools.
- The ability to order product samples to compare grain patterns and multi-tonal colors.
- Installation instructions.



Discovery Tool

Learn more at fiberondecking.com/discovery. The Fiberon Discovery Design Tools app can be found on the Apple App Store and the Google Play Store.



Apple and the Apple logo are trademarks of Apple Inc., registered in the U.S. and other countries. App Store is a service mark of Apple Inc. Google Play and the Google Play logo are trademarks of Google Inc.



Composite Cladding

for Rainscreen Applications

[Learn more at fiberoncladding.com](http://fiberoncladding.com) | 1.800.573.8841

©2020 Fiberon. All rights reserved. FIBERON and the Fiberon logo are trademarks of Fiber Composites, LLC. Registered trademarks are registered in the U.S. and may be registered internationally.

Made in the USA
MKT LIT BROCHURES RSN 08/20